

PEBP1 Antibody
Rabbit mAb
Catalog # AP90629**Specification**

PEBP1 Antibody - Product Information

Application	WB, IHC, ICC, IP
Primary Accession	P30086
Reactivity	Rat
Clonality	Monoclonal
Other Names	
PEBP1; HCNP; PBP; PEBP; RKIP;	

Isotype	Rabbit IgG
Host	Rabbit
Calculated MW	21057 Da

PEBP1 Antibody - Additional Information

Dilution	WB~~1:1000 IHC~~1:100~500 ICC~~N/A IP~~N/A
Purification	Affinity-chromatography
Immunogen	A synthesized peptide derived from human PEBP1
Description	Raf kinase inhibitor protein (RKIP) is a member of the phosphatidylethanolamine-binding protein (PEBP) family that associates with Raf-1 and the MEK and MAP kinases. RKIP has been shown to complex with Raf-1, MEK, and ERK. Although MEK and ERK can simultaneously bind RKIP, the association between Raf-1 and RKIP and that of RKIP and MEK are mutually exclusive. Thus, RKIP competitively disrupts the Raf-1-MEK complex and effectively terminates signal transmission from Raf-1 to MAP kinases.
Storage Condition and Buffer	Rabbit IgG in phosphate buffered saline , pH 7.4, 150mM NaCl, 0.02% sodium azide and 50% glycerol. Store at +4°C short term. Store at -20°C long term. Avoid freeze / thaw cycle.

PEBP1 Antibody - Protein Information**Name** PEBP1

Synonyms PBP, PEBP**Function**

Binds ATP, opioids and phosphatidylethanolamine. Has lower affinity for phosphatidylinositol and phosphatidylcholine. Serine protease inhibitor which inhibits thrombin, neuropsin and chymotrypsin but not trypsin, tissue type plasminogen activator and elastase (By similarity). Inhibits the kinase activity of RAF1 by inhibiting its activation and by dissociating the RAF1/MEK complex and acting as a competitive inhibitor of MEK phosphorylation.

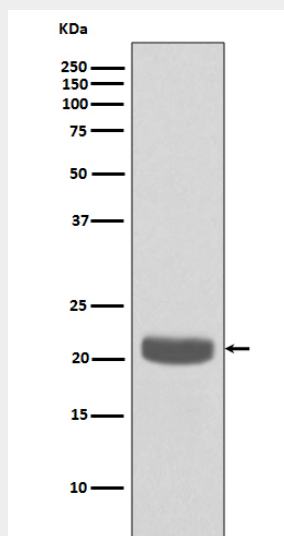
Cellular Location

Cytoplasm.

PEBP1 Antibody - Protocols

Provided below are standard protocols that you may find useful for product applications.

- [Western Blot](#)
- [Blocking Peptides](#)
- [Dot Blot](#)
- [Immunohistochemistry](#)
- [Immunofluorescence](#)
- [Immunoprecipitation](#)
- [Flow Cytometry](#)
- [Cell Culture](#)

PEBP1 Antibody - Images

Western blot analysis of PEBP1 expression in A549 cell lysate.